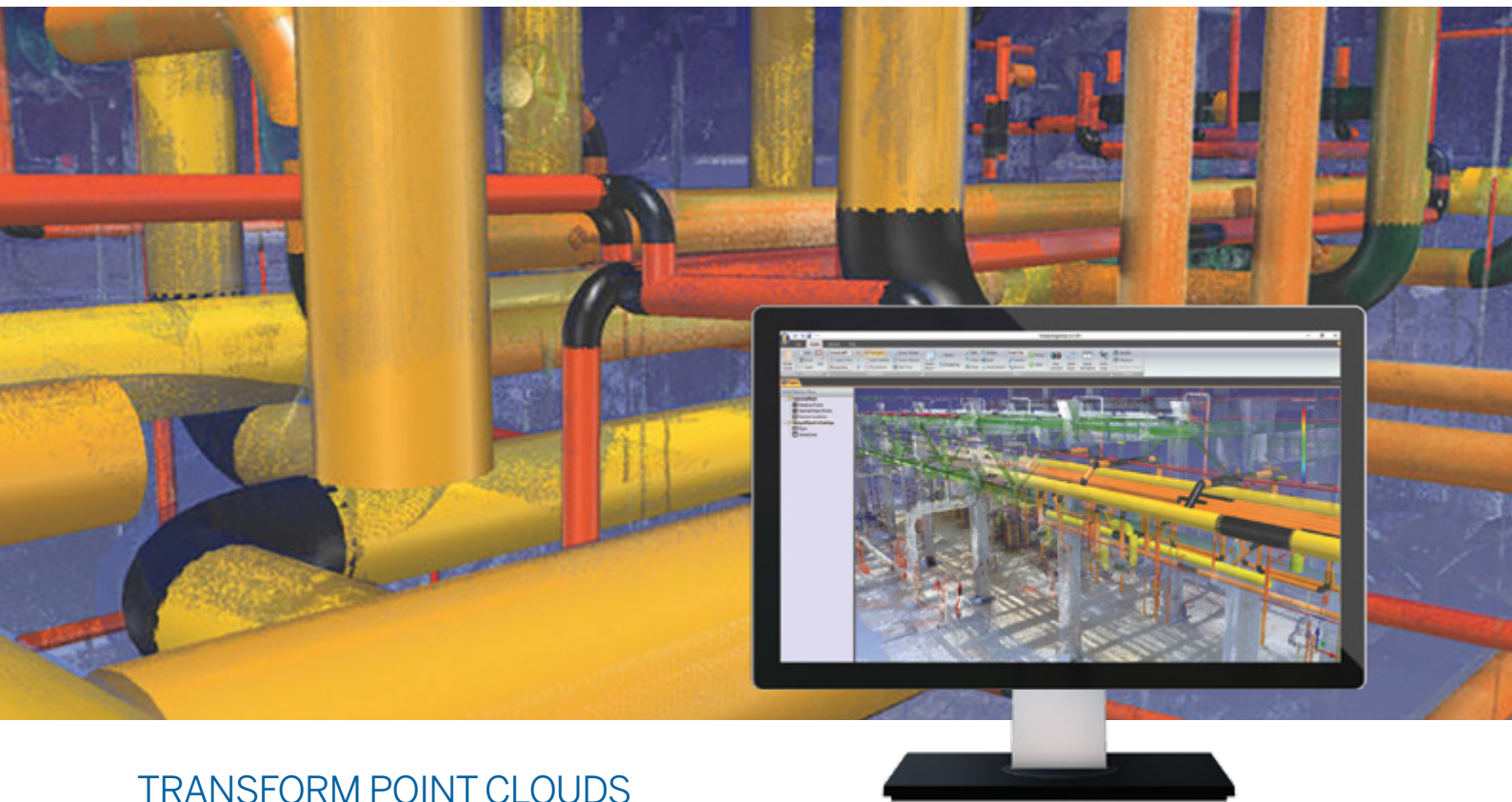


Trimble Laser Scanning Software

Trimble EdgeWise Software



TRANSFORM POINT CLOUDS INTO ACTIONABLE MODELS

Your job demands highly automated, intelligent solutions to quickly process and extract information from 3D scan data. Trimble EdgeWise software meets that need. It's the perfect complement to Trimble's 3D laser scanners and Trimble RealWorks software, providing efficient, end-to-end workflows to produce accurate BIM-ready models. Trimble EdgeWise will automatically detect structural elements from the point cloud and precisely model using the dimensions and geometries from its vast library of common elements.

Fast and flexible

Trimble EdgeWise has automated routines to quickly extract and model piping, duct, conduit, structural beams, concrete, walls, windows, doors and other elements so you can export them to your CAD platform of choice. Whether you're providing as-built information or modeling current conditions for a renovation project, EdgeWise can produce the information you need to make decisions on a broad range of projects including buildings, structures and processing facilities.

Accurate and intelligent

Trimble EdgeWise has built-in quality assurance tools that enable you to check the accuracy of every extracted element. If you have a poorly fitted object, you can quickly resize it and adjust it to the points, so your model is true to the point cloud. Advanced modeling methodology makes it easy to extract and precisely position every object of interest, as well as details such as valves, dimensional transitions, and custom fabricated ductwork.

Key Features of Trimble EdgeWise

- ▶ Automated feature extraction quickly identifies pipes, conduit, structural steel, ducts, structural concrete, walls, windows, and doors in 3D laser scanning point clouds
- ▶ Rapid modeling uses libraries to ensure industry-standard dimensions
- ▶ Intelligent model export eliminates the need to remodel and redefine attributes

Trimble RealWorks Software



THE POWER TO TRANSFORM 3D SCAN DATA

Trimble RealWorks is state-of-the-art office software for registering, visualizing, exploring and manipulating as-built or scene point cloud data collected with virtually any laser scanner. Efficiently manage, process, and analyze large data sets with confidence and transform them into compelling 2D and 3D deliverables. RealWorks is easy to use as the interface guides you through each tool step by step to ensure you reach your objectives.

Automatic registration you can trust

Automatically register projects with or without targets and be certain of registration accuracy. Automatic registration can extract spheres and flat black and white targets for target-based registration or use feature-based registration to automatically register target-less scans. Generate registration reports to check the accuracy and use the target analyzer tool to quickly edit targets if needed.

Effectively create and deliver

Quickly create intermediate or final 2D and 3D deliverables such as cross sections, meshes, contours, volumes, line

work and ortho-photos. The Modeling module allows you to create partial or full models quickly using simple CAD compliant geometries to model diverse shapes to represent the as-built environment. Create 3D forms and geometries for rendering, computation and other finite element analysis.

Advanced inspection and analysis

The advanced inspection tools in Trimble RealWorks are ideal for monitoring applications such as civil engineering (roads and bridges), mines and for storage tank inspections and calibrations. Compare as-built data pre-event to post-event or compare with design models and generate inspections to visualize and detect any variations. Obtain 2D and 3D graphic visualizations of gaps and deformations for easy analysis. You can import profiles and geometric primitives from a CAD design file or export graphic files in .dxf or .dgn format. You can also print inspection results using the RealWorks integrated print-out interface to share and deliver the detailed and insightful information your clients need.

Key Features of Trimble RealWorks

- ▶ Register scans easily with the industry's best automatic registration
- ▶ Effectively manage and visualize large data sets in Trimble RealWorks and Trimble Scan Explorer
- ▶ Utilize a wide range of inspection tools to analyze and compare point clouds and models
- ▶ Produce profiles, sections, contours, meshes, volumes, ortho-photos, line work and models
- ▶ Classification tool to automatically group common point cloud elements
- ▶ Export data for use in popular CAD software
- ▶ Publisher to freely share projects via Internet Explorer® and Trimble Scan Explorer
- ▶ Storage Tank tool for tank calibration, inspection and containment



Customer Service You Can Count on

Trimble offers the world-class customer service, support and training our users know and trust. Our service centers provide everything you need to optimize equipment performance, from preventative maintenance to full calibration, cleaning and repair. We'll do whatever it takes to minimize downtime and keep you running at maximum efficiency.

Trimble support offers an online Knowledge Center for quick access to product information, technical tips, workflow descriptions, videos, and more. When you need specific hardware or software support on a project, we have the experts that can help. Trimble has a vast network of trained Distribution Partners to provide local support and we offer Preferred Support contracts to give you direct access to highly experienced Trimble support engineers.

A History of Transforming the Way the World Works

For more than 35 years, Trimble's positioning-centric products have been transforming the way people, businesses and governments work.

The Trimble portfolio now includes more than 1,100 patents. And we continue to support our organic product development with strategic acquisitions to bring the latest positioning technologies to a broader market.

Trimble employees, coupled with a highly capable network of dealers and distribution partners, serve and support customers in 150 countries. Though best known for GPS technology, Trimble integrates GPS, laser, optical and inertial technologies with application software, wireless communications, and other services to provide complete, integrated solutions for our customers. These integrated solutions allow our customers to collect, manage and analyze complex information quickly and efficiently, making them more productive and more profitable.

For more information on our scanning portfolio please visit: trimble.com/3Dscanning

Contact your Distribution Partner today



BuildingPoint Mid-America

12125 Woodcrest Executive Drive, Suite 140

St. Louis, MO 63141

O: 314.682.1100

E: info@bpmidamerica.com

www.bpmidamerica.com

© 2018, Trimble Inc. All rights reserved. Trimble and the Globe & Triangle logo are trademarks of Trimble Inc., registered in the United States and in other countries. All other trademarks are the property of their respective owners. PN 022519-174 (02/18)